



HARMONY GARDENS, INC.

Landscape Design Feng Shui

www.harmonygardens.net

Certified Arborist ISA WE-10883A

Shelley Sparks, RLA #2896

12224 Addison Street

Valley Village, CA 91607

Phone (818) 505 - 9783

shelley@harmonygardens.net

December 2, 2019

Re: 800-840 S. Fairfax Avenue, Los Angeles, CA 90034,
A.P.N: 5086-008-010, 5086-008-012

According to Ordinance 177404 the following trees native tree species are protected: Oak trees including indigenous Oaks, Southern California Black Walnut, Western Sycamore and California Bay Tree. Any trees of the above species that are larger than 4" caliper at 4.5 feet above the ground level are to be considered protected for the purpose of this ordinance. Trees that are to be retained on the site need to be protected during any grading process to within 5' of the drip line of the tree to preclude potential damage to the tree. Non-protected trees of 8" caliper or larger need to be noted too.

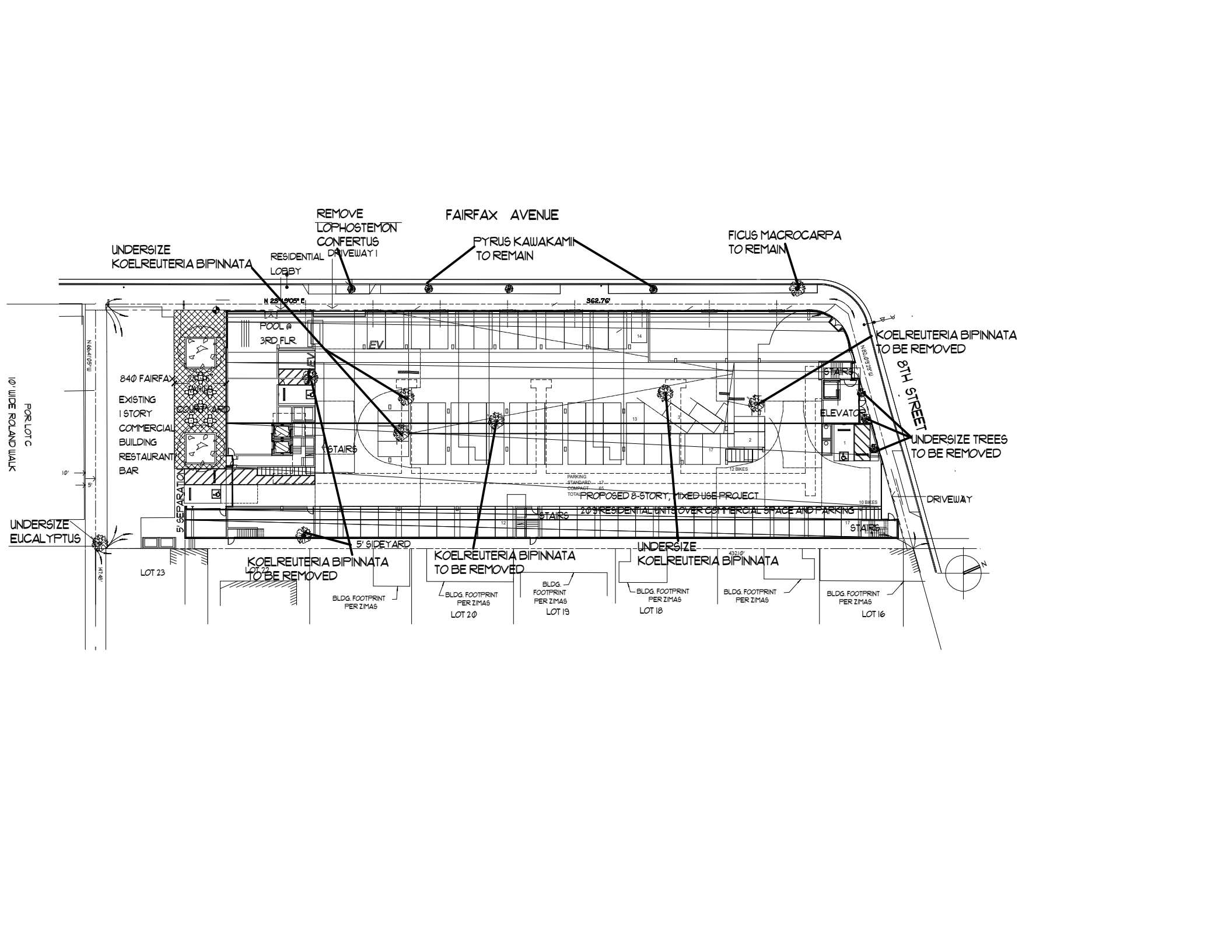
The protected trees may be relocated or removed upon prior approval of removal if a) its presence prevents the reasonable development of the property, b) the health of the tree is in decline and its restoration is not advisable or feasible c) It is in danger of falling d) It interferes with proposed utility or roadways within or without property e) It has no apparent aesthetic value that will contribute to the appearance and design of a proposed subdivision.

I have reviewed the subject properties on December 2, 2019 and the surrounding properties to determine if any protected trees are present. The lot in question had no protected trees and I observed no protected trees in the vicinity of the property. Trees observed on the property were four *Koelreuteria bipinnata*. In the public right of way there is one *Lophostemon confertus*, one *Ficus macrocarpa* and four *Pyrus kawakamii*. Adjacent properties had no trees. The new development will require the removal of the trees on private property. The new driveway will also require the removal of one tree in the public right of way. None of the species on adjacent properties or public right of way should be impacted by the development on this lot.

Respectfully submitted,

Shelley Sparks

Shelley Sparks, Harmony Gardens, Inc.
RLA #2896, Certified Arborist ISA WE-10883A



			TREE MATRIX			
Are there any trees on the property, <u>and/or</u> within the public right-of-way next to the property, that will be removed or impacted* as a result of the project? - YES						
TREE STATUS	QUANTITY	TREE TYPES	REMOVED	RELOCATED	REPLACED	IMPACTED
Public Right of Way	5					
Non Protected	3	<i>Pyrus kawakamii</i>	0			
Non Protected	1	<i>Ficus macrocarpa</i>	0			
Non Protected	1	<i>Lophostemon confertus</i>	1			
Private property	4					
Non Protected	4	<i>Koelreuteria bipinnata</i>	4			